



In partnership with the Urban Energy Network



SUSTAINABLE
ENERGY
AFRICA



4th and 5th August 2015, Parktonian, Johannesburg

Local and sub-national renewable energy and energy efficiency

Challenges and opportunities for economic development

ERLN is an initiative of



Government Technical Advisory Centre (GTAC)

Government Technical Advisory Centre - established in 2012 as a Government Component

Object: To assist Organs of State in building their capacity for efficient, effective and transparent financial management

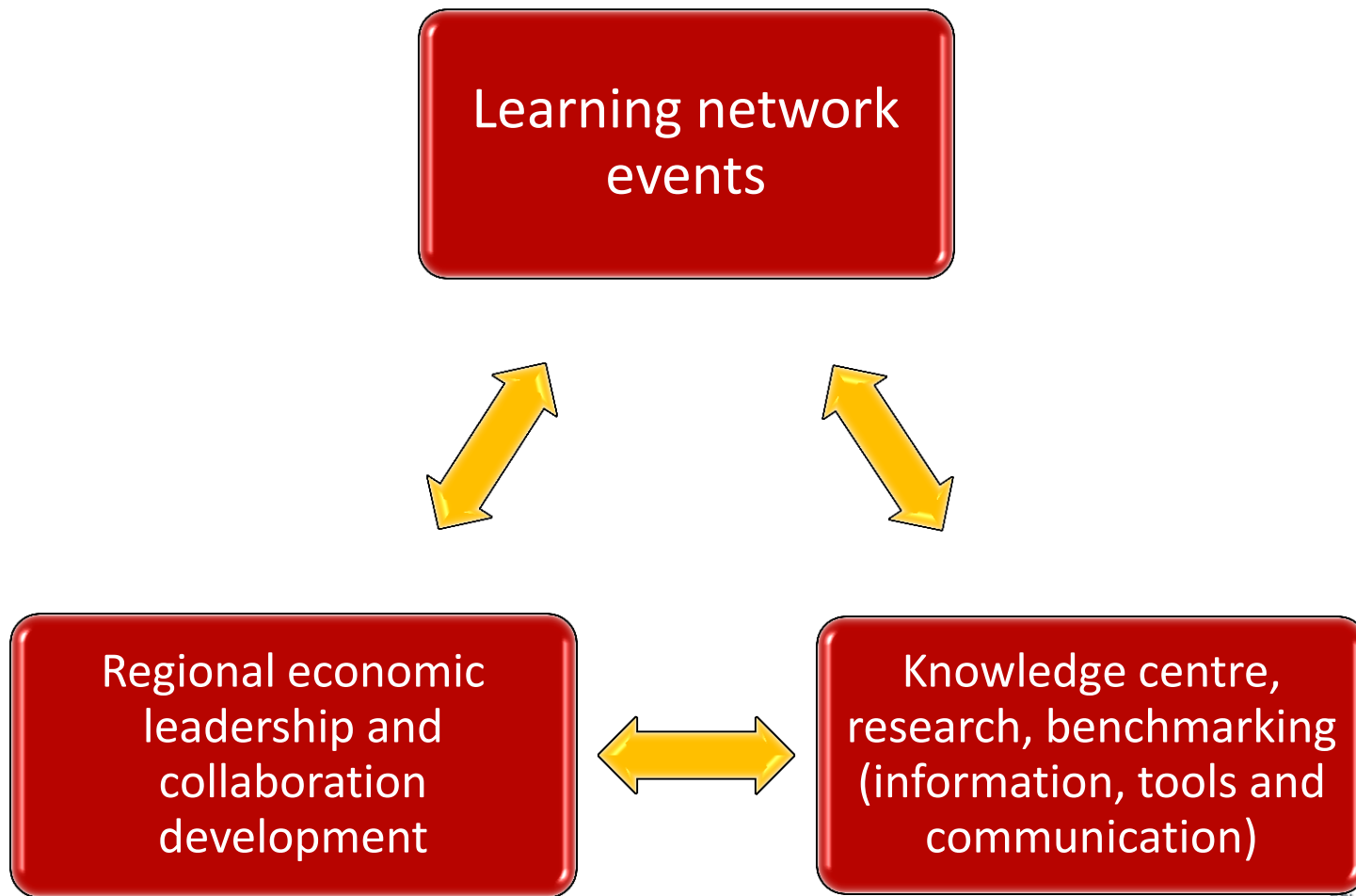
Functions:

- Render technical consulting services to Centre of Government departments and Organs of State
- Provide specialised procurement support to high-impact government initiatives
- Render advice on the feasibility of infrastructure projects
- Provide knowledge management for projects undertaken
- Anything ancillary to the functions listed above

ERLN Purpose and focus

- The purpose of the Economies of Regions Learning Network (ERLN) is to bring together economic development practitioners in all spheres of South African government in a spirit of enquiry and cooperation and to strengthen their agency as leaders in the regional economic development arena.
- On this basis, and through a focus on regional economic development approaches, understandings, tools and skills, the ERLN aims to contribute to innovation and the effective advancement and realisation of South Africa's inclusive growth.
- The ERLN is a Community of Practice.

Programme components



Urban Energy Network



Local and sub-national energy: Objectives of workshop

- “Can we stimulate renewable energy (RE) and energy efficiency (EE) markets in a manner that is developmental and equitable whilst being sustainable for municipalities?”
 - Potentials for regional economic development through RE and EE trading systems and infrastructure
 - Energy security and resilience at a sub-national/municipal level
 - Challenges and opportunities for municipal revenue in context of RE and EE
 - The energy value chain and working across spheres and agencies towards a coordinated and constructive response

THE ENERGY LANDSCAPE



THE ENERGY LANDSCAPE

National

Local



 Eskom Total generating capacity: **41194MW**

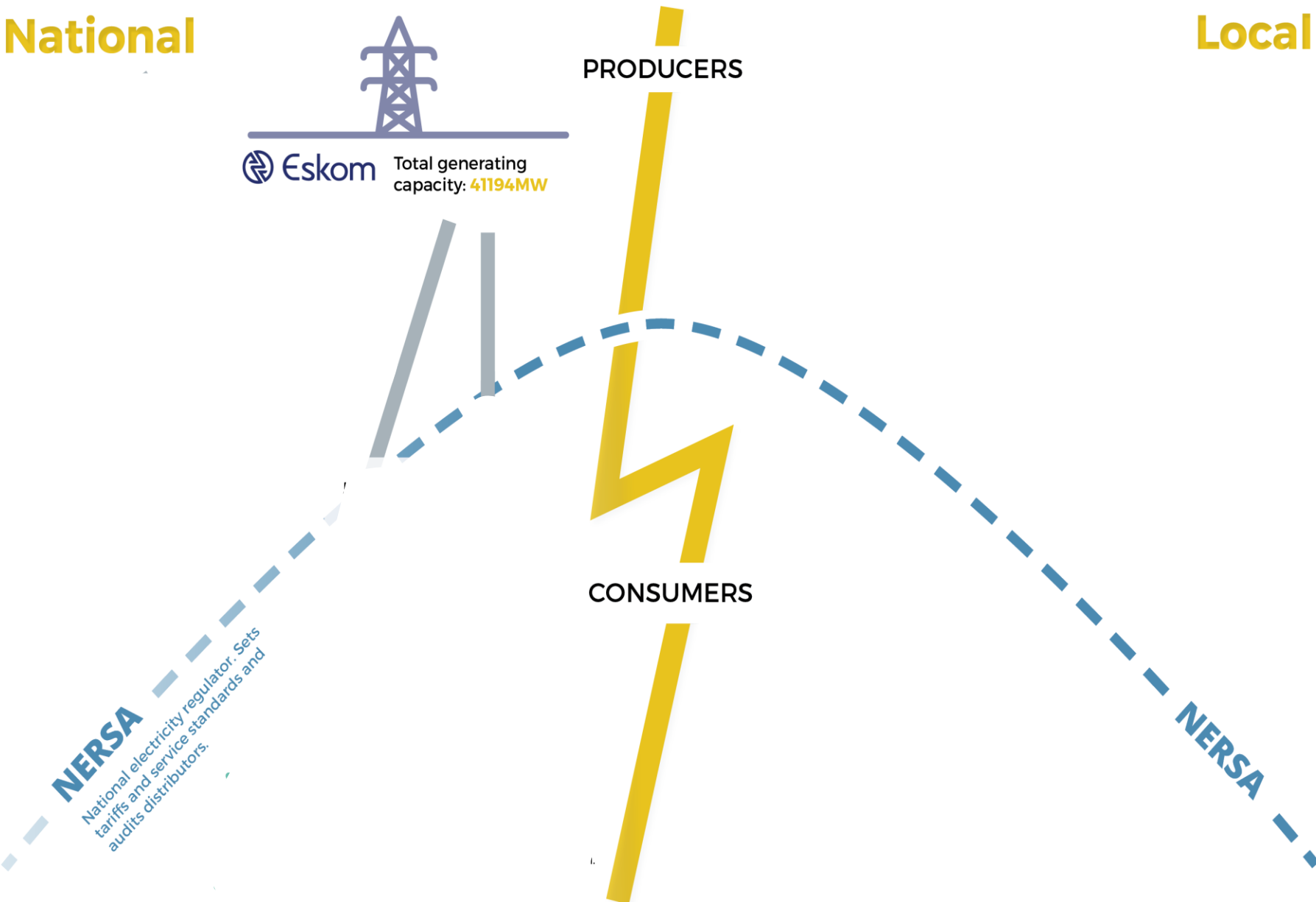
PRODUCERS

CONSUMERS

NERSA

National electricity regulator. Sets tariffs and service standards and audits distributors.

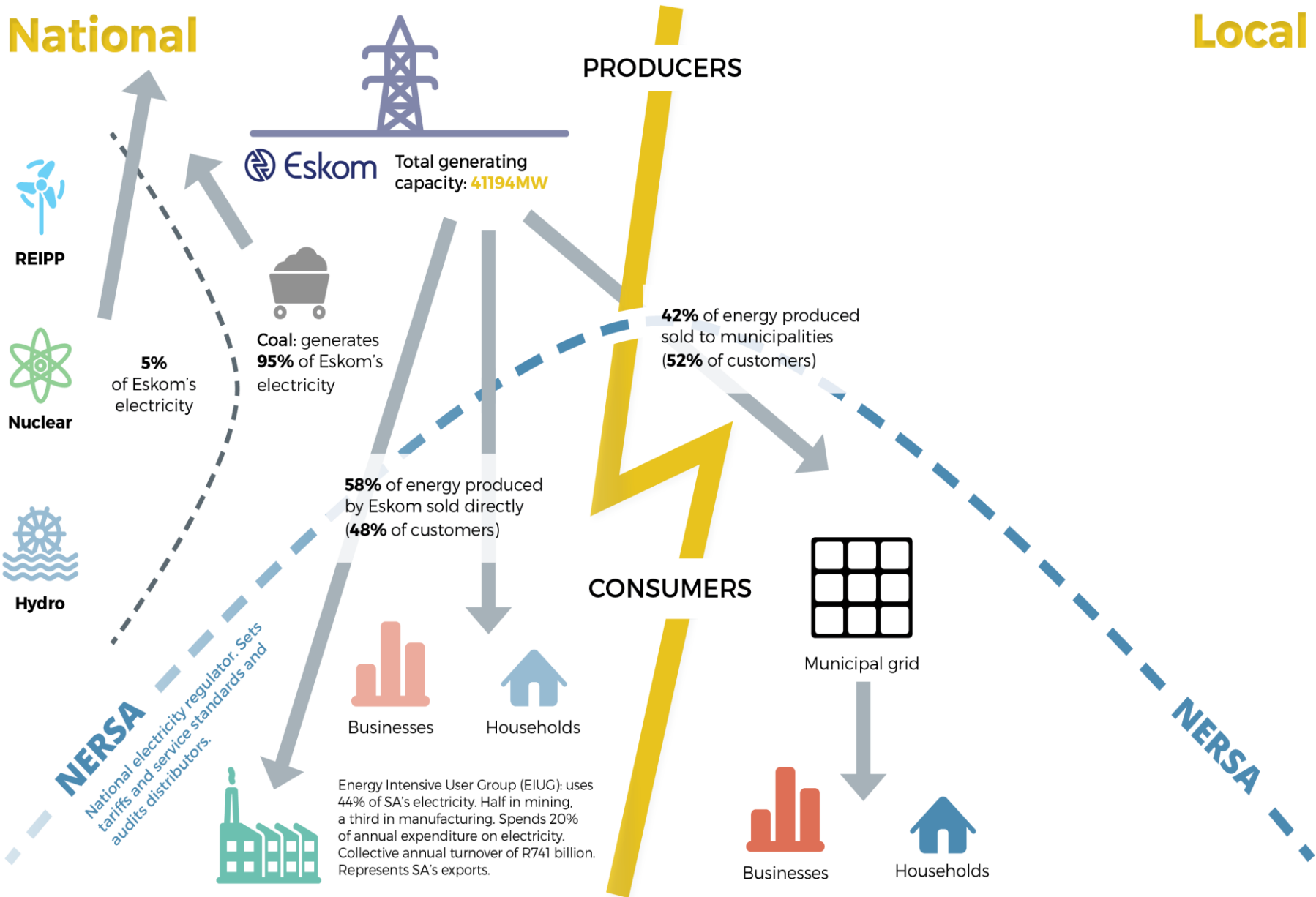
NERSA



THE ENERGY LANDSCAPE

National

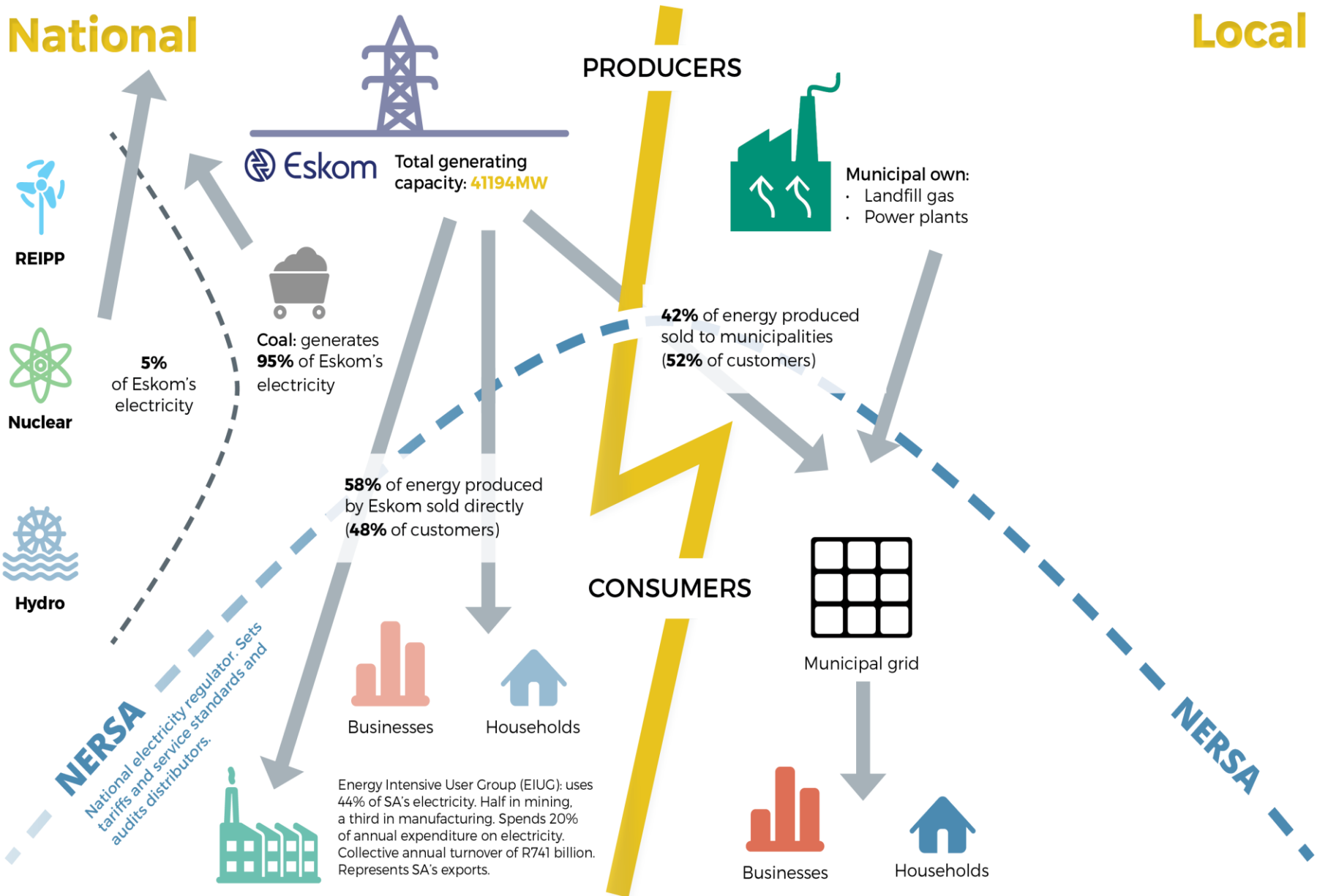
Local



THE ENERGY LANDSCAPE

National

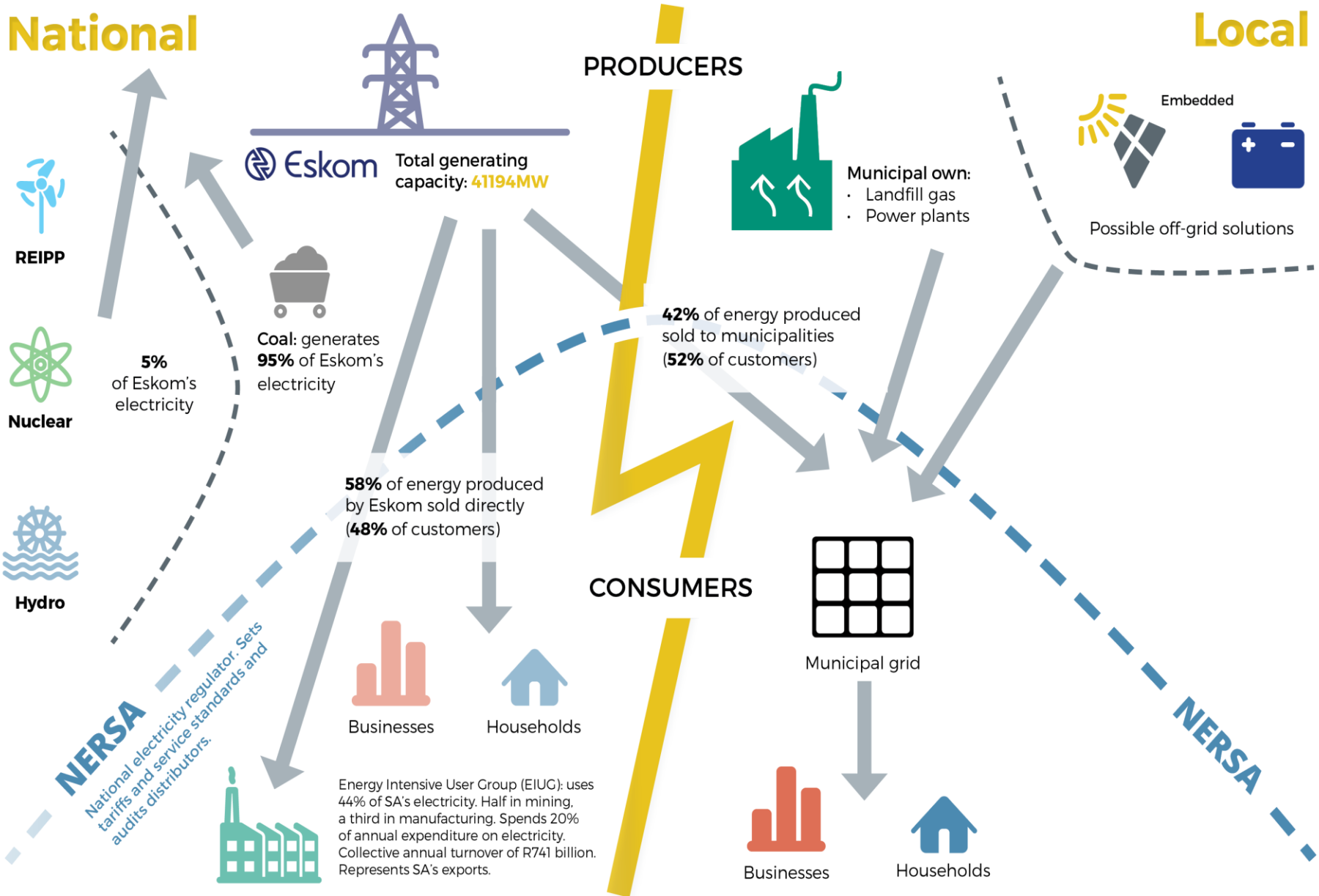
Local



THE ENERGY LANDSCAPE

National

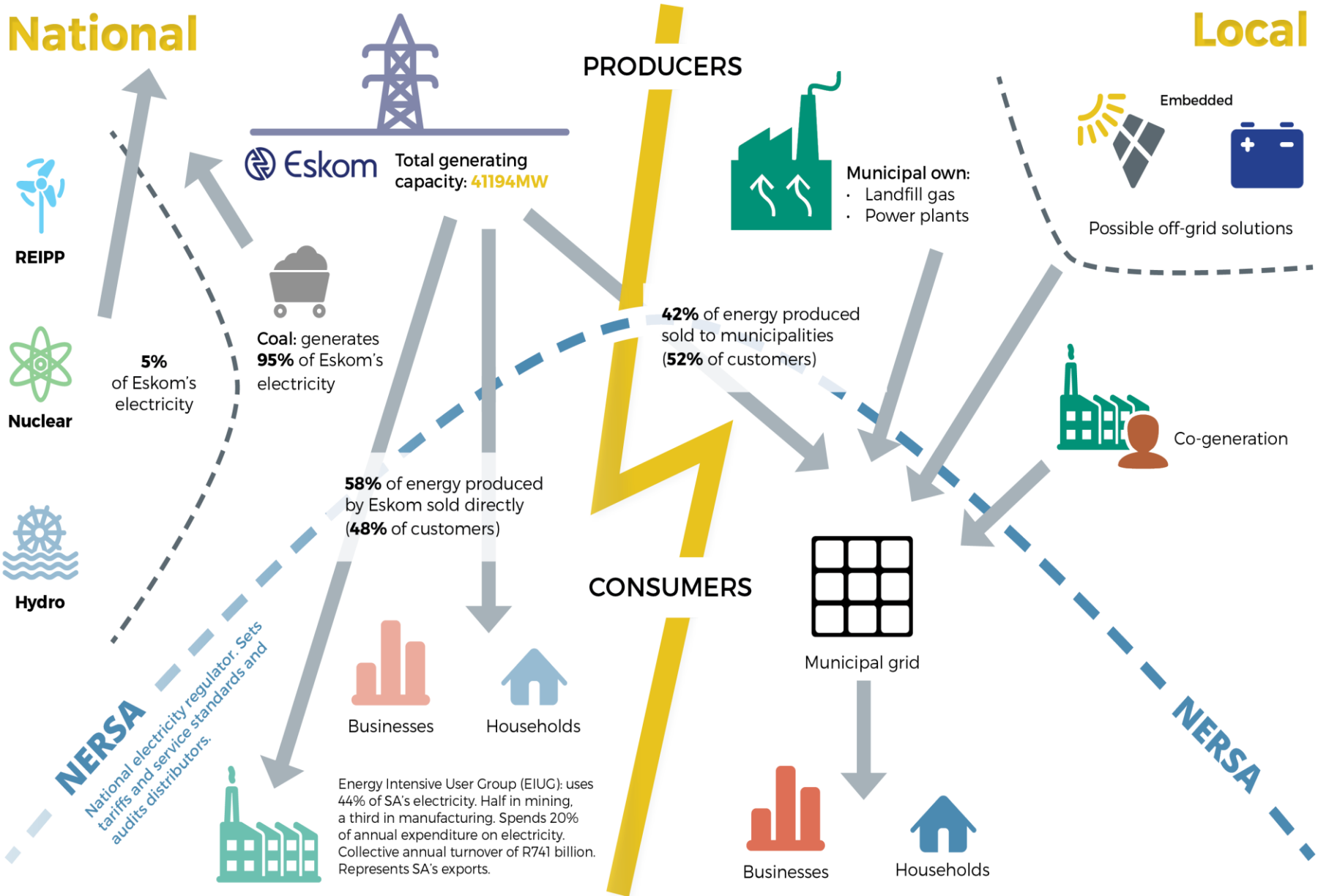
Local



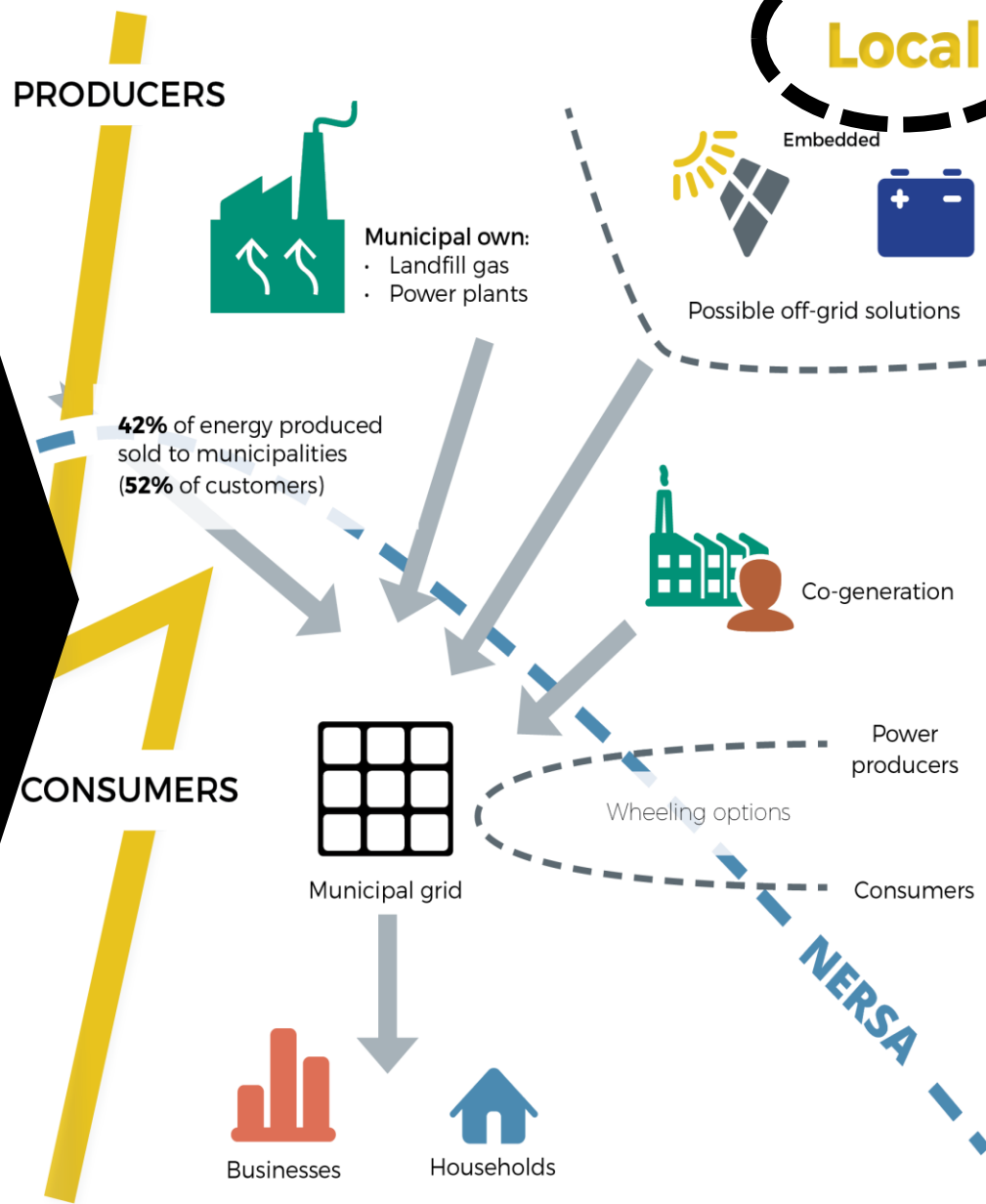
THE ENERGY LANDSCAPE

National

Local



This **local** production represents where the impetus of energy focus and investment is shifting – with the potential for disruptive impacts. It is leading to new energy consumption patterns and also new economic opportunities. But represents risks for municipal revenue, creating stranded infrastructure and negatively impacting on equity of access

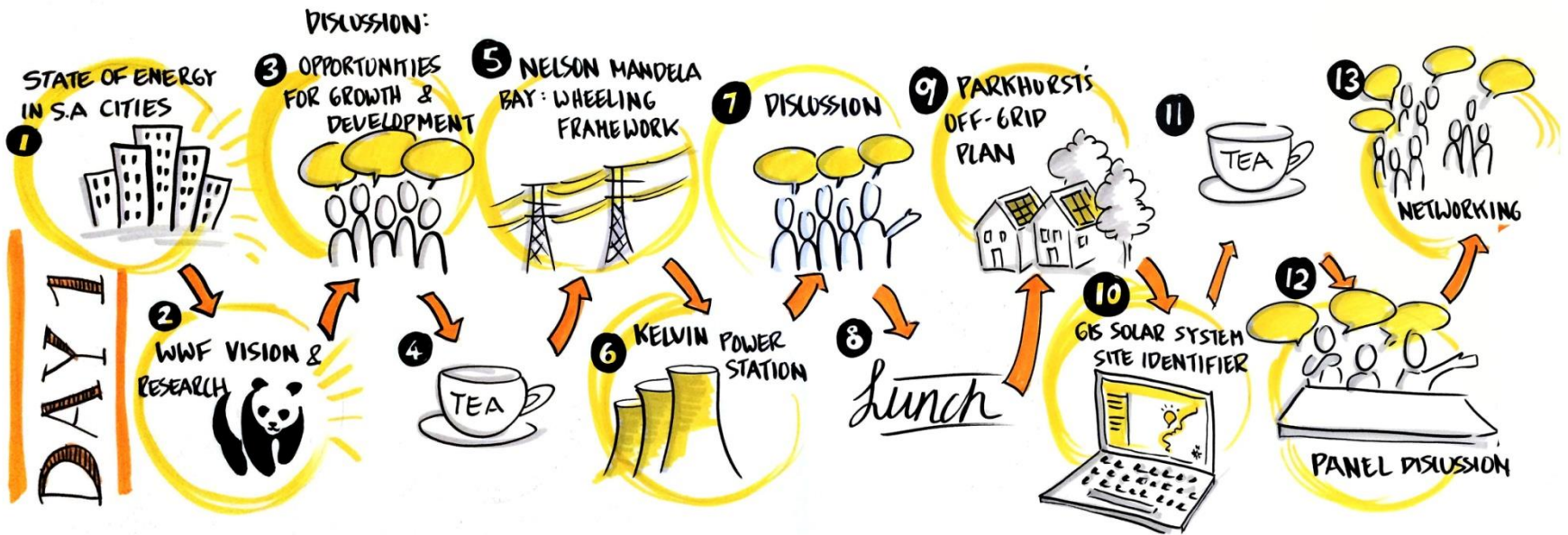


Questions

- How can we work together to:
 - Resolve challenges?
 - Unlock economic opportunities?
 - Enable equity and sustainability?

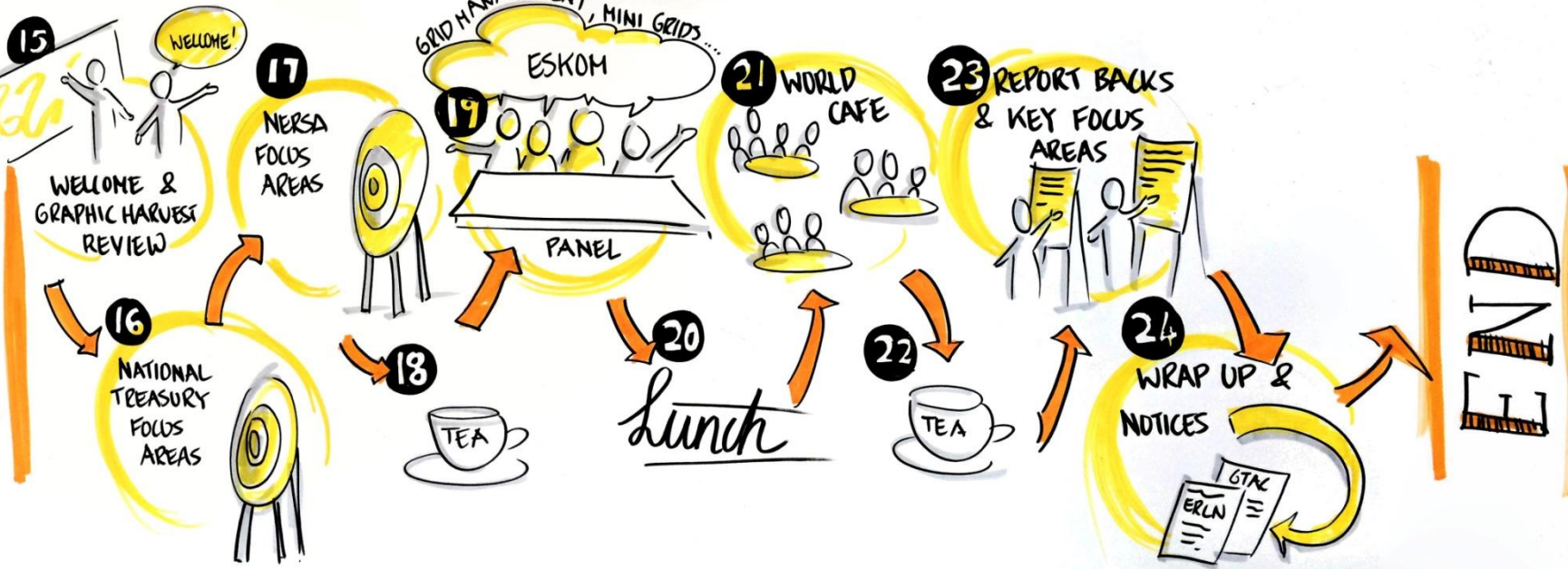
- [Agenda](#)

Agenda



Agenda

DAY 2





In partnership with the Urban Energy Network



SUSTAINABLE
ENERGY
AFRICA



SALGA
South African Local Government Association



South African
CitiesNetwork

Let's get started!

ERLN is an initiative of



government
technical advisory
centre

National Treasury
REPUBLIC OF SOUTH AFRICA